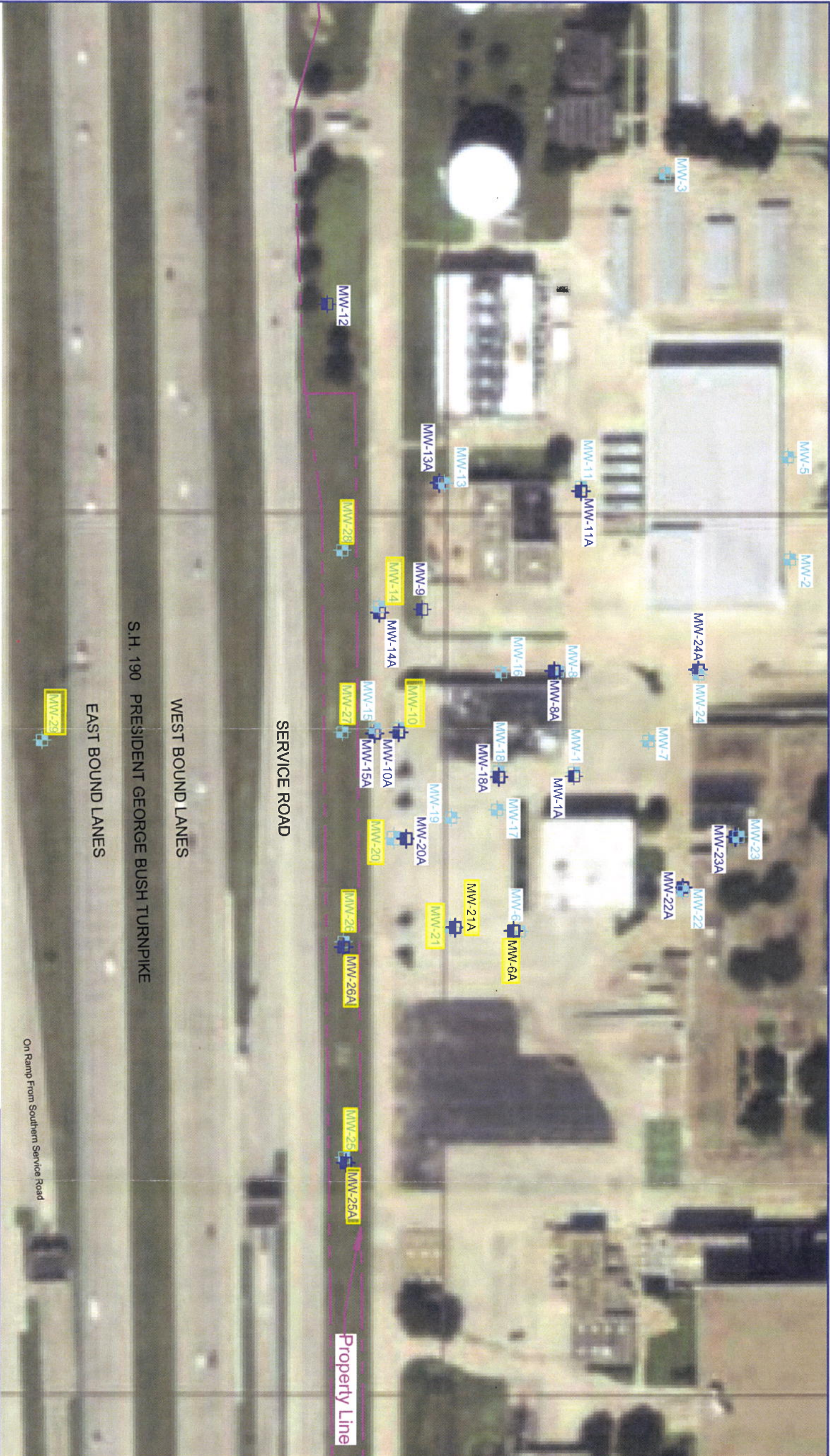


MONTHLY STATUS REPORT

Date: October 6, 2014

GENERAL INFORMATION	
Reporting Month and Year: September 2014	Assigned TCEQ Coordinator: Trevor Andres
Facility Name: PSC – Plano Campus	
Facility Address: 2300 West Plano Parkway	
Facility City and State: Plano, Texas	County: Collin
Voluntary Cleanup Program (VCP) No.: 2480	SWR No.: 32109
Customer Reference No.: CN604033076	Regulated Entity No.: RN100663400
SUMMARY OF MONTHLY ACTIVITIES	
<p>Analytical results for groundwater samples collected from five Groundwater-Bearing Unit (GWBU) 1 and two GWBU 2 off-property monitoring wells were received and reviewed in September. In addition, results for samples collected from four GWBU 1 and two GWBU 2 on-property monitoring wells located adjacent to the southern property line and the eastern reach of the assessment area as specified in the approved Work Plan No. 3 were also received from the contract laboratory and reviewed. The COC analytical results for the above referenced monitoring wells are summarized on the attached table. The locations of those monitoring wells sampled for COC analyses per Work Plan No. 3 are show on the attached map.</p> <p>As indicated on the attached table, 1,1-dichloroethene (1,1-DCE) was detected in GWBU 1 monitoring wells MW-29 (southernmost off-property monitoring well on the south side of the President George Bush Turnpike) and MW-27 (south and adjacent to the southern property line) at concentrations below its protective concentration level (PCL). Chloroform was also detected in the sample from MW-29 at a concentration below its PCL. Trichloroethylene (TCE) and 1,1-DCE were detected in GWBU 2 monitoring wells MW-25A and MW-26A, respectively. These two GWBU 2 monitoring wells are south and adjacent to the southern property line. The TCE concentration detected in the MW-25A groundwater sample was below its PCL. However, the 1,1-DCE concentration reported for the groundwater sample from MW-26A slightly exceeded its PCL. The applicable PCL for this assessment is the groundwater ingestion pathway (^{GW}GW_{ing}).</p>	
STATUS OF SUBMITTALS AND OUTSTANDING ISSUES	
<p>Per the September 11, 2014 TCEQ letter, the APAR due date has been extended to November 30, 2015. Responses to the comments included along with the TCEQ letter will be submitted for receipt by the TCEQ on or before November 10, 2014. Notifications to property owners from whose property groundwater samples were collected were submitted to the property owners or their representatives via certified mail as of the date of this status report.</p>	
SUMMARY OF UPCOMING/PLANNED ACTIVITIES	
<p>Additional groundwater sampling of the off-property and selected on-property GWBU 1 and 2 monitoring wells is being considered in order to further assess the off-property extent and migration; we will advise TCEQ once we complete our analysis. The process to acquire a City of Plano ordinance authorizing a Municipal Setting Designation (MSD), and City of Richardson resolution supporting the MSD will be initiated once assessment activities are completed. Completed milestones in the MSD application process will be documented in future monthly status reports.</p>	



Legend:
 GWBU 1 Monitoring Well
 GWBU 2 Monitoring Well
 Sampled Monitoring Well

Property Boundaries: Collin County Appraisal District Interactive Map Accessed on January 14, 2013
 Note: Buildings designation is by single letter, for example Building "N"



PSC Management Limited Partnership 2300 West Plano Parkway Plano, Texas		MONITORING WELLS SAMPLED DURING WORK PLAN NO. 3 FIELD ACTIVITY	
	Designed By P. C. Moore	Checked By P. Moore	Project No. 01330
			Date 05/24/2014
			Sheet 1 of 1